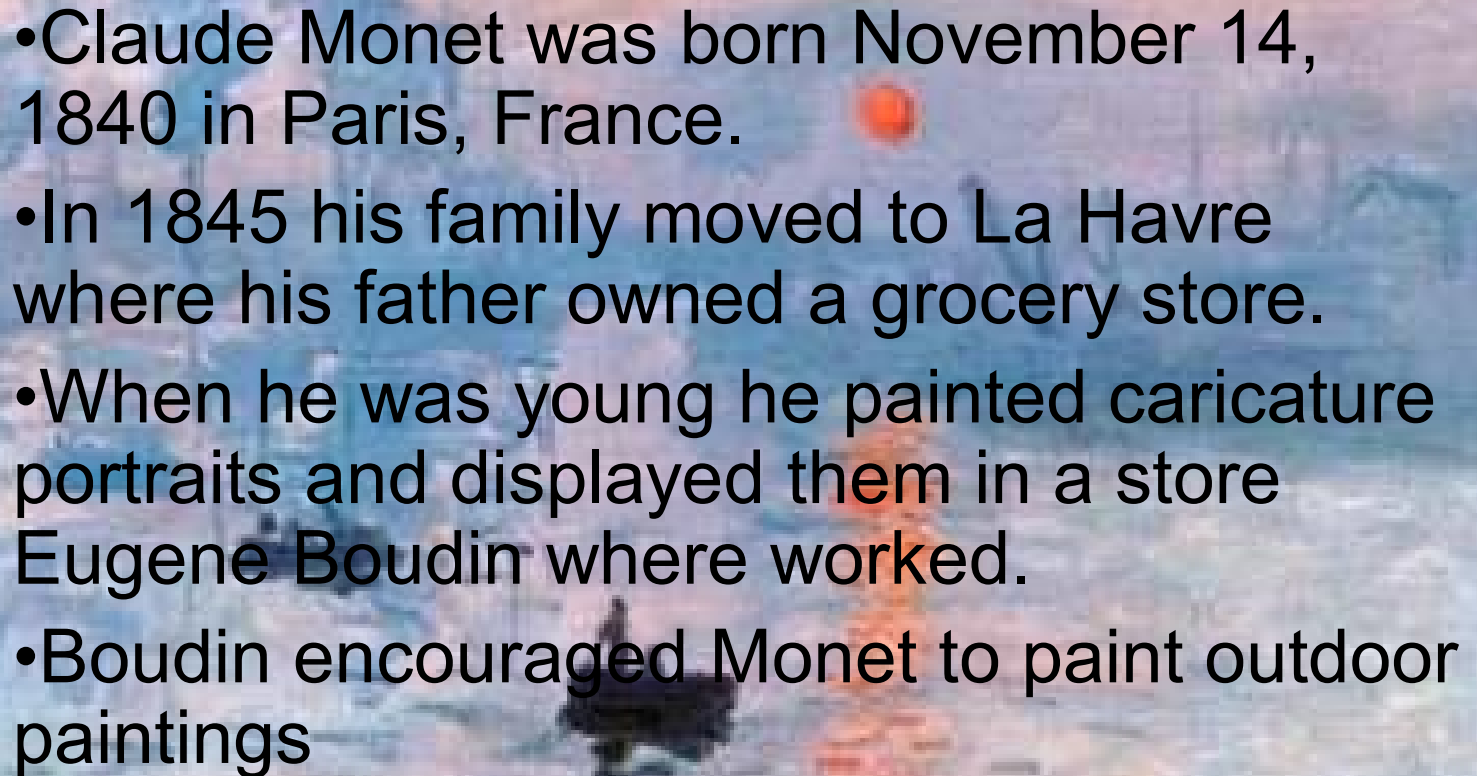




# Claude Monet

By, Sam Alcorn

- 
- Claude Monet was born November 14, 1840 in Paris, France.
  - In 1845 his family moved to La Havre where his father owned a grocery store.
  - When he was young he painted caricature portraits and displayed them in a store Eugene Boudin where worked.
  - Boudin encouraged Monet to paint outdoor paintings



- Monet's parents were not against him being a painter however they wanted him to go to art school
- Monet didn't like that idea so in 1859 against his parent's wishes, Monet joined the Swiss army.
- After leaving the army a year later he meets two other painters Pissaro and Corbet.



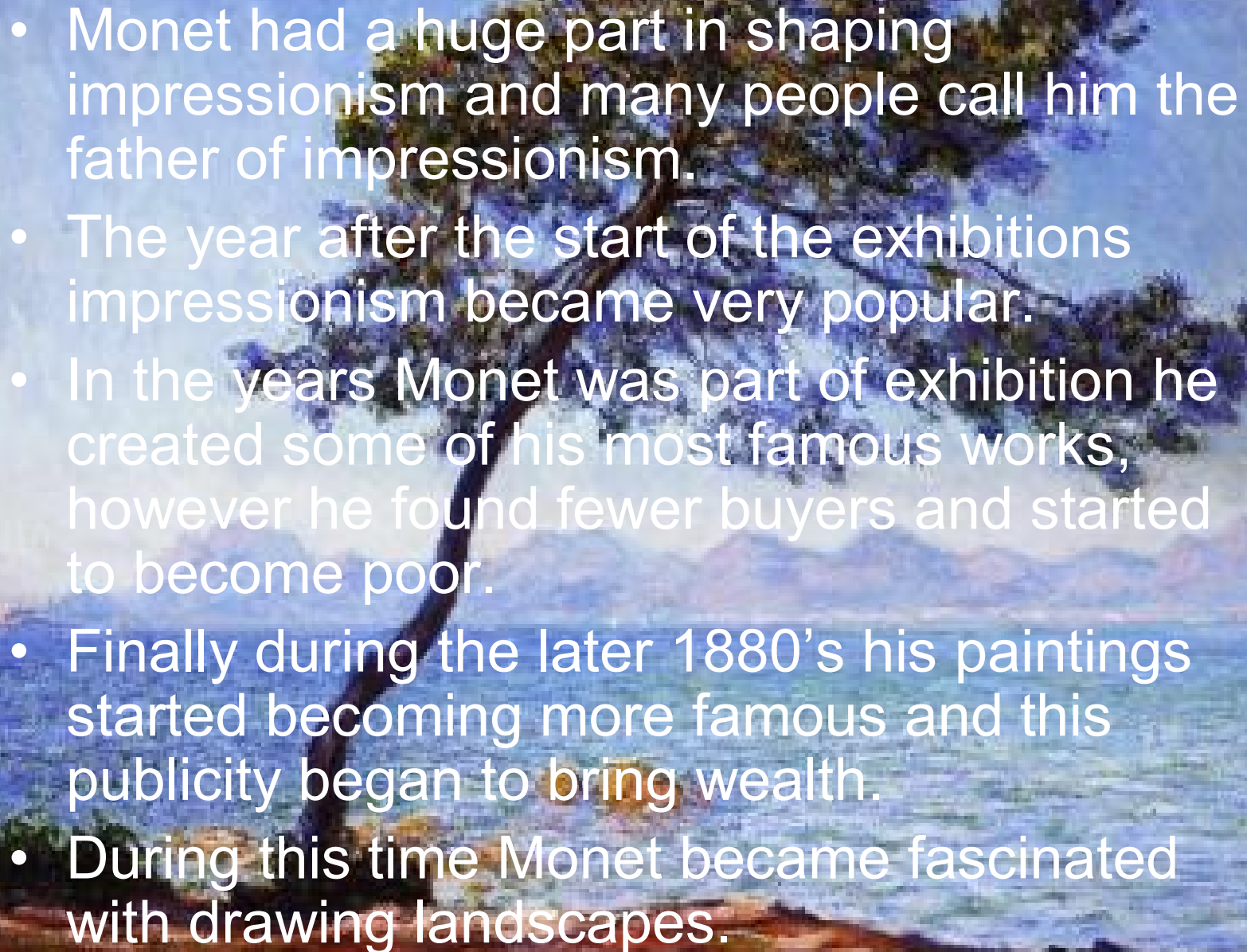
# Family life

- Monet had his first son, Jean Monet, in 1867 with his lady friend Camille.
- Then in 1870 Claude marries Camille Doncieux.
- His wife was in many of his paintings.
- Then in 1878 they have their second son, Michel Monet.
- Then a year later his wife Camille dies.

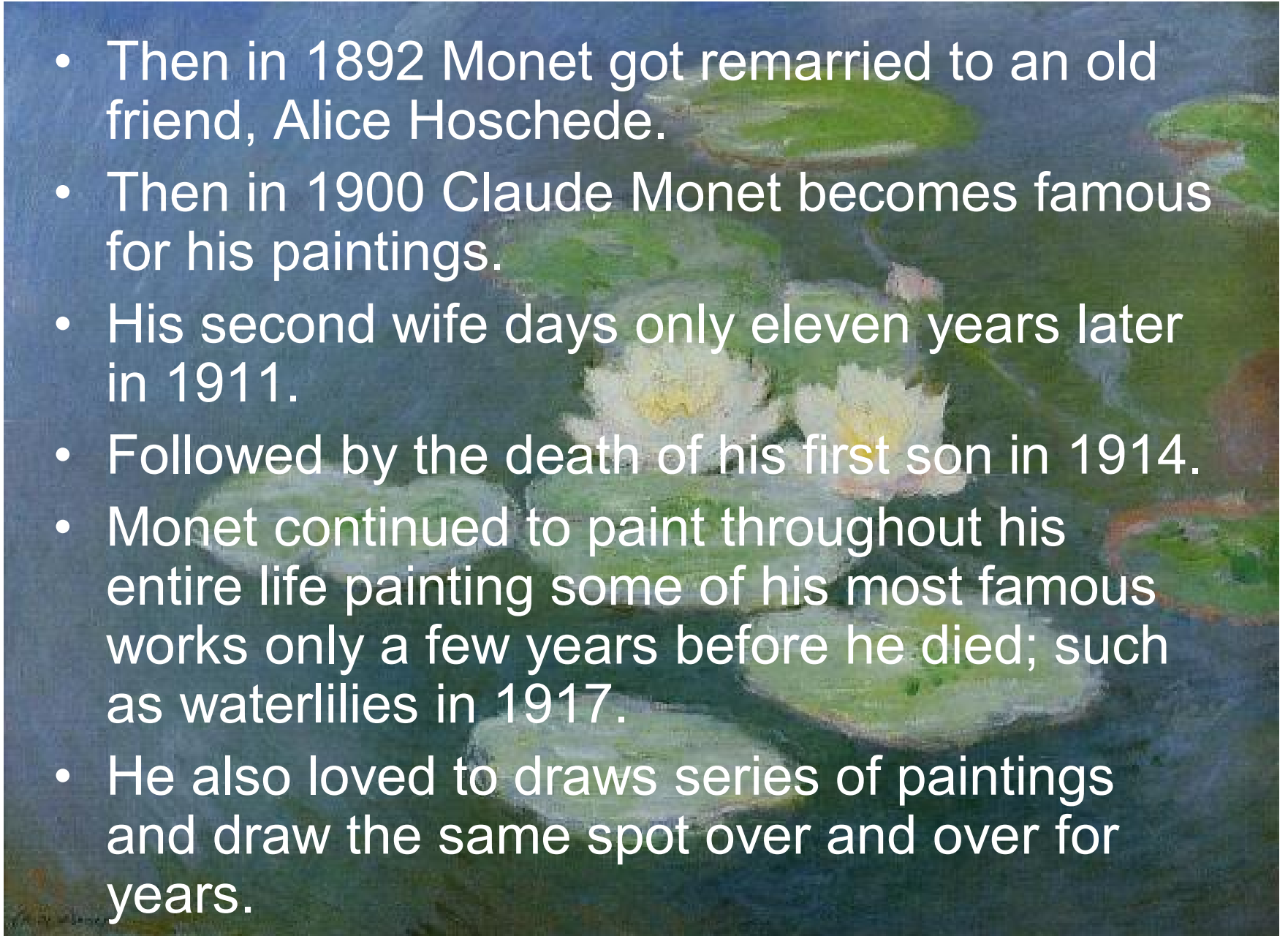


# The rising of impressionism

- When Monet painted a floating restaurant at Bougival in 1869 it was a major turning point in his career.
- This painting started a new artistic movement later known as impressionism.
- Then in 1874 Monet and his friends formed their own group and had their own exhibition.
- One of the paintings Monet painted for his exhibition was Impression: Sunrise; this gave impressionist movement its name.

- 
- A painting of a tree by the water, likely by J.M.W. Turner, with a white text overlay. The painting shows a large, dark tree trunk in the foreground, leaning towards the right. The background is a soft, hazy landscape with a body of water and distant hills. The overall style is characteristic of the Impressionist movement, with visible brushstrokes and a focus on light and color.
- Monet had a huge part in shaping impressionism and many people call him the father of impressionism.
  - The year after the start of the exhibitions impressionism became very popular.
  - In the years Monet was part of exhibition he created some of his most famous works, however he found fewer buyers and started to become poor.
  - Finally during the later 1880's his paintings started becoming more famous and this publicity began to bring wealth.
  - During this time Monet became fascinated with drawing landscapes.

- Then in 1892 Monet got remarried to an old friend, Alice Hoschede.
- Then in 1900 Claude Monet becomes famous for his paintings.
- His second wife days only eleven years later in 1911.
- Followed by the death of his first son in 1914.
- Monet continued to paint throughout his entire life painting some of his most famous works only a few years before he died; such as waterlilies in 1917.
- He also loved to draw series of paintings and draw the same spot over and over for years.





# The End of Monet's Life

- In 1923 Monet becomes almost blind and has surgery.
- His sight improves a little and he continues to paint.
- Only to die three years later from lung cancer on December 5th, 1926



# Bibliography

- <http://www.abcgallery.com/M/monet/monetbio.html>
- <http://www.intermonet.com/oeuvre/>
- <http://giverny.org/monet/biograph/>